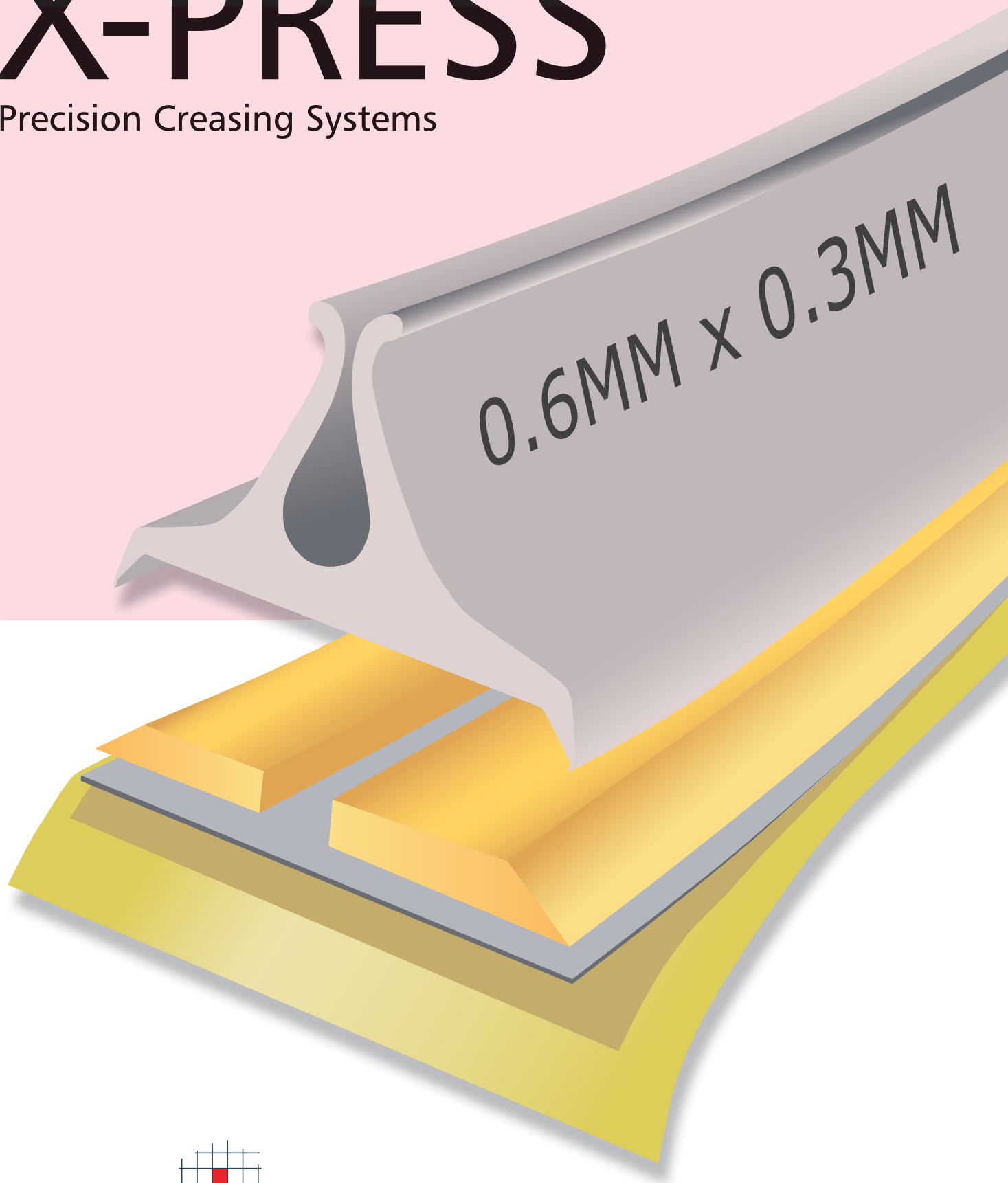
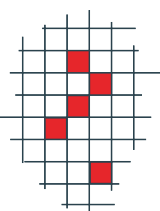


X-PRESS[®]

Precision Creasing Systems



Trimplex

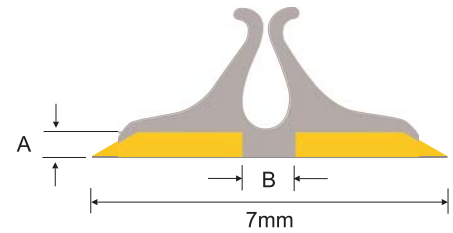


X-PRESS[®]

Standard Matrix

Plastic Counter – Steel Base

Precision engineered plastic shoulders on micro thin steel base with perfectly registered locator.
Standard sizes of X-press have 36 strips of 700mm in each box.



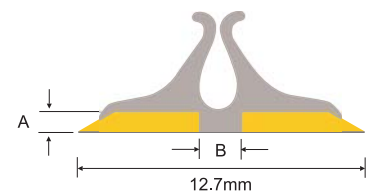
Colour Code	A	B	Board Thickness		Board Wt (gms/m ²)	Order Code
			(microns)	(0.001")		
Platinum	0.40	x 0.50	≤100	2-4	50-100	XS-050-040
Orange	0.40	x 0.80	≤100	2-6	50-150	XS-080-040
Beige	0.40	x 1.00	100-200	4-8	100-175	XS-100-040
Pale Blue	0.40	x 1.30	300-400	12-16	225-275	XS-130-040
White	0.45	x 1.30	325-400	13-16	240-270	XS-130-045
Bright Green	0.50	x 1.30	325-500	13-20	240-375	XS-130-050
Black	0.55	x 1.30	325-450	13-18	240-300	XS-130-055
Apple Green	0.45	x 1.50	375-450	15-18	260-300	XS-150-045
Yellow	0.50	x 1.50	425-500	17-20	290-335	XS-150-050
Rosewood	0.70	x 1.50	475-550	19-22	350-365	XS-150-070
Violet	0.50	x 1.70	475-500	19-22	350-375	XS-170-050
Powder Blue	0.55	x 1.70	500-550	20-22	335-365	XS-170-055
Purple	0.60	x 1.70	525-600	20-24	350-400	XS-170-060
Olive	0.50	x 1.90	500-550	20-24	335-365	XS-190-050
Green	0.60	x 1.90	525-600	20-24	350-400	XS-190-060
Ash Grey	0.80	x 1.90	550-600	22-24	365-400	XS-190-080
Ebony	0.50	x 2.10	500-550	20-22	335-365	XS-210-050
Burgundy	0.65	x 2.10	575-650	23-26	385-435	XS-210-065
Pink	0.80	x 2.10	600-700	24-28	400-465	XS-210-080
Red	0.70	x 2.30	625-700	25-28	420-465	XS-230-070
Blue	0.80	x 2.70	700-800	28-32	465-535	XS-270-080

Standard locators are suitable for rule sizes 2-3.

Large Matrix

Plastic Counter – Steel Base

X-press Crease Large sizes are suitable for thicker board sizes and have 21 strips of 700mm in each box.



Colour Code	A	B	Board Thickness		Board Wt (gms/m ²)	Rule Size (points)	Order Codes
			(microns)	(0.001")			
Brown	1.00	x 3.00	800-1000	32-40	535-665	2/3, 3-4	XL-300-100
Yellow	1.30	x 3.00	800-1000	32-40	535-665	3/4	XL-300-130
Grey	1.20	x 4.00	1000-1300	40-51	665-800	2, 2/3, 3/4, 4, 6	XL-400-120
Green	1.60	x 4.00	1000-1300	40-51	665-800	4, 6	XL-400-160
Black	1.50	x 5.00	1300-1500	51-60	800-900	3/4, 4, 6	XL-500-150
Red	2.00	x 5.00	1300-1500	51-60	800-900	4, 6	XL-500-200
Cream	1.70	x 6.00	1500-1700	60-67	900-1000	4, 6	XL-600-170
Blue	2.50	x 6.00	1500-1700	60-67	900-1000	4, 6	XL-600-250

Please specify rule size when ordering

Off-Centre Matrix

Plastic Counter – Steel Base

Specially engineered for jobs that require two creases close together, X-press Off-Centre is placed on the creasing rules with the narrow sides adjacent enabling the smallest possible distance between creasing centres to be calculated as follows:-

Distance Centre to Centre (C) = 2x shoulder width (i.e 1.5mm) plus creasing width required (B)

X-press Off-Centre has 36 strips of 700mm in each box.



Colour Code	A	B	Board Thickness		Board Wt (gms/m ²)	Order Code
			(microns)	(0.001")		
Beige	0.40	1.00	100-200	4-8	100-175	XO-310-040
White	0.45	1.30	340-410	13-16	240-270	XO-313-045
Yellow	0.50	1.50	440-500	17-20	290-335	XO-315-050

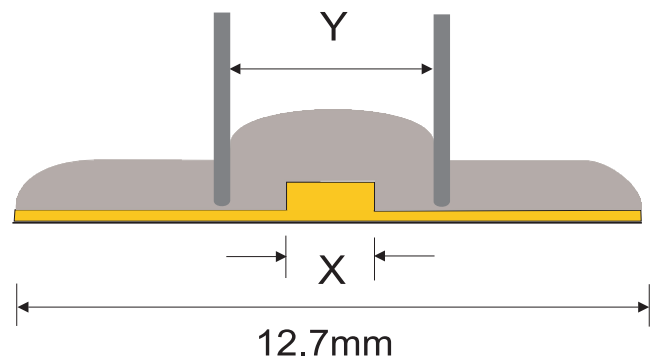
Locators are suitable for rule sizes 2-3.

Reverse Bend Matrix

Plastic Counter

Specially engineered to produce crease when cutting from the reverse side, the locator on X-press Reverse Bend fits between the two rules to perfectly register the matrix.

Strips are 700mm long and standard sizes up to 2.7mm locator widths (dimension Y in diagram) have 36 strips in each box and large sizes with locator widths over 4.0mm have 21 strips per box.

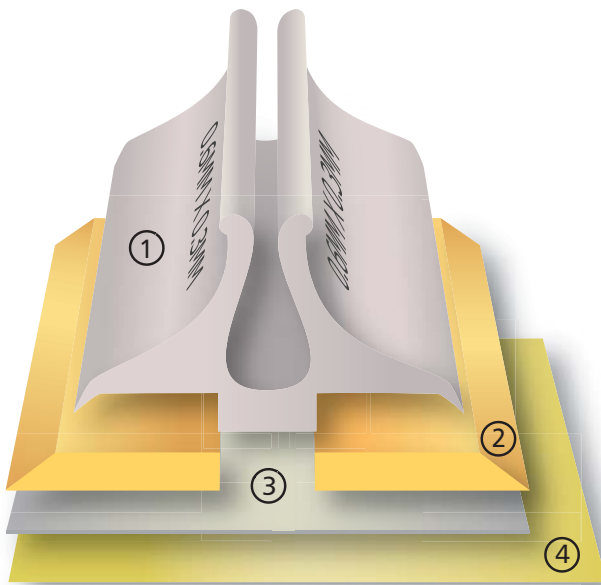


Colour Code	X	Y	Board Thickness		Board Wt (gms/m ²)	Order Code
			(microns)	(0.001")		
Black	0.70	2.70	350-425	15-18	260-300	XR-270-007
Orange	0.80	2.70	400-450	16-18	280-300	XR-270-008
Beige	1.00	2.70	400-475	16-18	280-310	XR-270-010
White	1.20	2.70	425-500	16-20	280-325	XR-270-012
Green	1.50	4.00	450-550	18-22	300-365	XT-400-015
Yellow	1.50	5.00	500-600	20-24	350-400	XT-500-015
Purple	2.00	5.00	800-900	32-36	535-600	XT-500-020
Blue	1.50	6.00	550-650	22-26	365-435	XT-600-015
Pink	2.00	6.00	900-950	36-38	600-650	XT-600-020
Brown	3.00	6.00	950-1050	38-42	650-700	XT-600-030

X-press Reverse Bend is suitable for all rule point sizes.

Product Profile

X-PRESS Creasing Matrix delivers reliability and accuracy. Xpress consists of precision engineered plastic shoulders mounted on a steel film base with a perfectly registered locator. The original style of creasing system provides benefits in time and cost based on both the reliability delivered by steel base durability and accuracy derived from the high quality manufacture. Available in standard, large, off-centre and reverse bend sizes, Xpress delivers reliable and accurate creasing every time.



- ① Locator
- ② Chamfered edge profile
- ③ Steel base
- ④ Finger lift adhesive backing paper

Key features include:

- Precision engineered plastic shoulders are extremely accurate and durable
- Steel film base to enhance durability and accuracy
- Perfectly registered locator ensures accurate and high quality creasing
- Original style of creasing system
- Steel Base and high quality manufacture delivers benefits in time and cost due to longer runs
- All profiles are individually colour coded and labelled for easy reference and to minimise the risk of mixing sizes during make ready (see separate charts)

Available in a comprehensive range of sizes:

- Standard
- Large
- Off-centre
- Mini
- Double-crease
- Reverse Bend



Manufactured under a quality system certified as complying with ISO 9001 by an accredited certification body.

12/09